

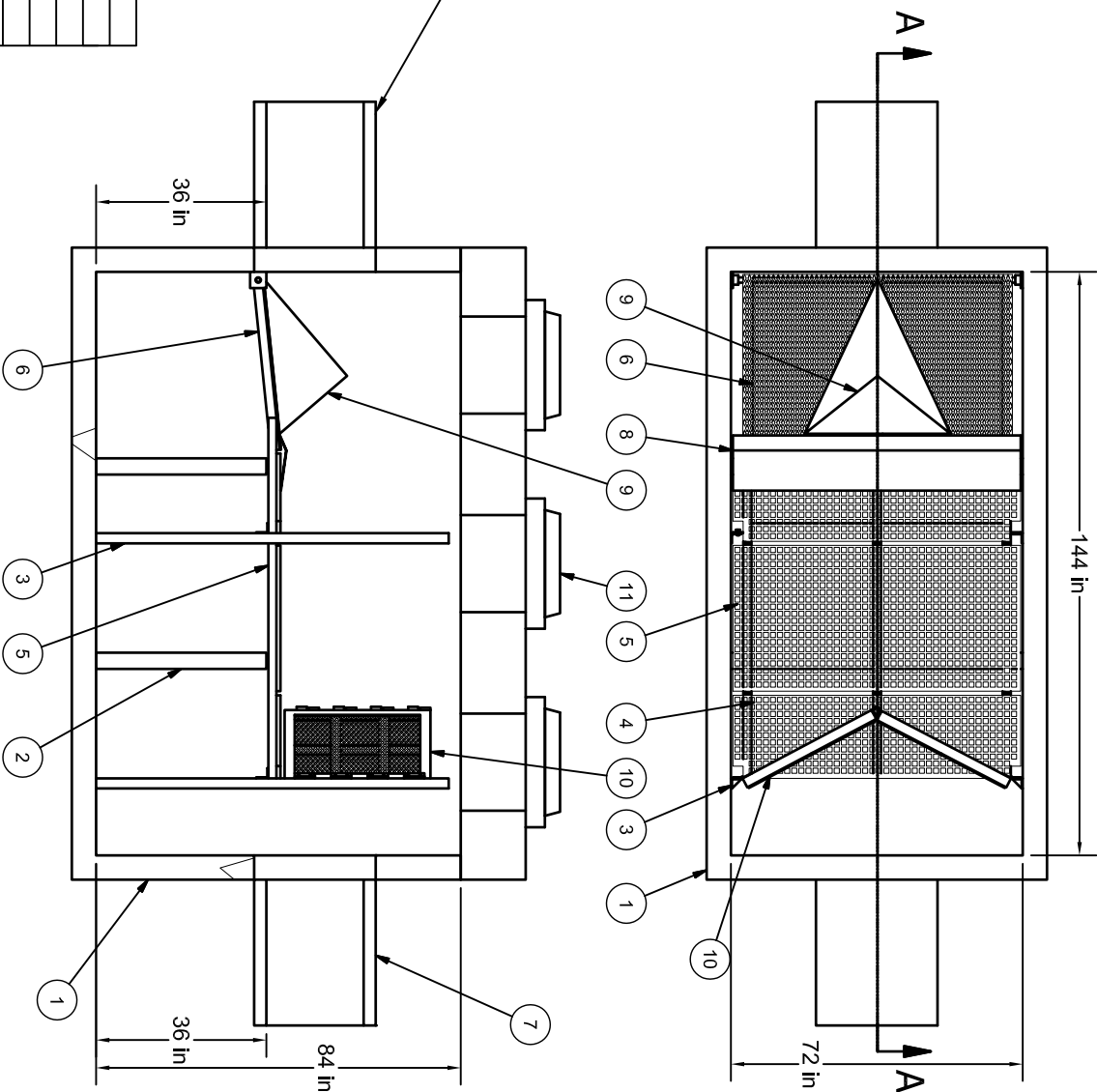
MAXIMUM PIPE SIZE: 42 in

**EQUIPMENT PERFORMANCE**

Max. Treatment Flow Rate = 66 cfs  
 Typical Treatment Flow Rate = 24 cfs  
 Open office area of screen system = 50.4 sq.ft.  
 Min. Screenings Storage capacity = 7.8 yd3  
 Min. Sediment storage volume = 2.5 yd3

Parts List

ITEM	QTY	SIZE	DESCRIPTION
1	1	6 ft x 12 ft	VAULT
2	2		BAFFLES
3	4		MOUNTING BRACKETS
4	3		HORZ. SCREEN PANELS
5	1		FRAME
6	1		INLET SCREEN PANEL
7	2	42 in	INLET/OUTLET PIPES (BY OTHERS)
8	1		TRANSITION CONNECTOR
9	1		FLOW SPREADER
10	2		VERT. SCREEN WEIR
11	3	30 in	FRAME AND COVER



**Notes**

1. MANHOLE WALL AND SLAB THICKNESSES ARE NOT TO SCALE.
2. CONTACT HYDRO INTERNATIONAL FOR A BOTTOM OF STRUCTURE ELEVATION PRIOR TO SETTING HYDRO DRYSCREEN SYSTEMS.
3. CONTRACTOR TO CONFIRM RIM, PIPE INVERTS, PIPE DIA. AND PIPE ORIENTATION PRIOR TO RELEASE OF UNIT TO FABRICATION.

JF	1/15/15	FIRST ISSUE
REV/BY	DATE	DESCRIPTION

**REVISION HISTORY**

Date	Scale
1/15/15	NTS

Drawn	Checked	Approved
JF		

**Title**

DRYSCREEN  
 6' x 12' VAULT

**GENERAL ARRANGEMENT**



Stormwater Solutions  
 94 Hutchins Drive  
 Portland, Maine 04102  
 Tel: (207) 756-6200  
 Fax: (207) 756-6212  
 stormwaterinquiry@hydro-int.com

CAD Ref: DS-6x12  
 Project No. XX-XXXX  
 Drawing No. DS-6x12 Rev.

Any warranty made by Hydro International only applies to those items supplied by it. Hydro International does not accept and expressly disclaims any responsibility or liability for any structure, plant or equipment (or the performance thereof) designed, built, manufactured or supplied by any third-party. Hydro International has a policy of continuous product development and reserves the right to amend the specifications of any of its products or equipment at any time. Hydro International expressly disclaims any liability for the performance of its equipment (or any part thereof) used or made subject to conditions outside of the conditions set forth in Hydro International's design specifications. Hydro International owns the copyright in and to this drawing, which is supplied in confidence, and all intended recipients of the drawing, by their use thereof, agree to hold the drawing in confidence and not to use it for any purpose other than for which it was supplied and not reproduce, in whole or in part, the drawing or any of the equipment or structures depicted therein, without prior written permission of Hydro International.